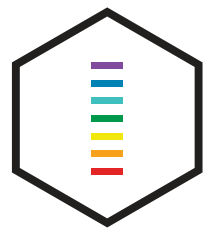




DELIGHT™

*LED PRODUCTS CATALOG*





# DELIGHT™

**DELIGHT Technologies**  
1555 Boulevard des Laurentides, Bureau 300  
Laval, Québec, Canada  
H7M 5Y6

**T** +1 (888) 400.3941  
**E** [info@iseedelight.com](mailto:info@iseedelight.com)  
**W** [ISEEDELIGHT.COM](http://ISEEDELIGHT.COM)

## TABLE OF CONTENTS

DELIGHT	OUR COMPANY	4	LED INDOOR	OVERVIEW	38
	SERVICES	6		HIGH BAY	40
				LINEAR HIGH BAY	42
EXAGON	OVERVIEW	8		TRI-PROOF AND TUBE	46
				PANEL	48
INDEX	PRODUCT OVERVIEW	10		TROFFER	50
				DOWNLIGHT	52
LED OUTDOOR	OVERVIEW	12		BULB	54
	STREET LIGHT	14			
	SOLAR STREET LIGHT	18	LED UNDERGROUND LIGHT	OVERVIEW	58
	AREA AND PARKING LIGHT	20		UNDERGROUND	60
	OUTDOOR AREA LIGHTING	24			
	FLOOD LIGHT	26	LED ARCHITECTURAL	OVERVIEW	62
	STADIUM LIGHT	28		LINEAR	64
	LANDSCAPE	30		SUSPENDED LIGHT	66
	WALL PACK	32		WALL SCONCE	78
	WALL WASHER	34			
	CANOPY	36	GET IN TOUCH		88

# HOW TO ORDER

THREE EASY WAYS TO ORDER



## REACH US DIRECTLY

By phone, email or through our website contact form. Specify the products you are interested in for a quick order or specify your needs and we will be happy to assist you.

T +1 (888) 400.3941  
E [info@iseedelight.com](mailto:info@iseedelight.com)  
W [ISEEDELIGHT.COM](http://ISEEDELIGHT.COM)



## ACCESS OUR ONLINE CATALOG

You can make a quick order inquiry, view product specifications and make your own shopping cart. You can also pay directly online with a credit card or send us a cheque. We'll reach you to confirm delivery and ensure everything is at your satisfaction before and after shipment.



## REGISTER TO OUR PROMOTIONAL EMAIL LIST

Register to our exclusive promotional newsletter to get informed about our latest products and exclusive offers.

GO to: [iseedelight.com/contact](http://iseedelight.com/contact)

Just add your name and email, select: "Check here to receive email updates".



# MISSION STATEMENT

## UPLIFTING YOUR LIGHTING EXPERIENCE

This brochure is a showcase of products that represent just a sampling of our extensive collection of intelligent luminaire and control solutions designed to help you and your customers solve the toughest of lighting challenges.

Whether lighting a Class A LEED commercial property, a beautiful streetscape, or a harsh environment industrial facility, DELIGHT offers solutions that are designed to improve the environments in which they're placed. With a commitment towards reducing energy usage, enhancing architecture and providing a world-class lighting environment that can improve the human experience, ***we're focused on you.***

# OUR COMMITMENT TO EXCELLENCE

## WE STRIVE EVERYDAY TO OFFER THE BEST LIGHTING QUALITY AT BEST PRICE

- Aesthetically appealing lighting fixtures and optics
- Lighting design focused on energy efficiency, performance and easy maintenance
- Strong manufacturing partners from around the globe to develop high end products at low cost
- All products are rigorously tested and certified based on industry's highest standards

## TRANSFORMING SPACES TO INSPIRE AND IMPROVE LIVING

- High-end customization and innovative control solutions that meet and exceed our customer's expectation
- We walk the extra mile to offer beautiful lighting patterns, colours and adaptive controls
- Our solutions are designed to upgrade actual lighting systems towards a smarter, more attractive and interactive built environment

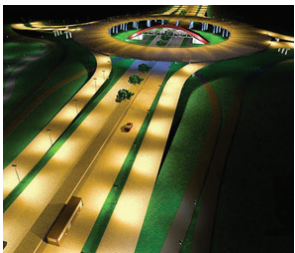
## SELLING IS NOT THE END OF THE STORY, IT'S THE BEGINNING

- Support during the entire life cycle of our products is key to ensure our customers' peace of mind
- Individual or group monitoring of multiple parameters through a web application to ensure uptime, optimal use and performance
- A technology that enables the integration of other IoT devices, sensors and networking protocols leading the way to a more connected and smarter world

# SERVICES

DELIGHT's engineering and design team focus is to provide smart lighting solutions to meet and go beyond the highest standards of our customers: property managers, architects, ESCO firms, contractors and municipalities.

We not only care about offering the best lighting innovations and the most advanced control system available on the market we get involved from the beginning of the retrofit process to the end of the commissioning, utilizing latest design tools and methodologies to fill all your needs and more.



## LIGHTING PROJECT FEASIBILITY:

- Site inventory
- Energy savings
- Subsidies

## LIGHTING PROJECT DESIGN:

- Products and control selection
- 3D simulations and photometric analysis
- On-site sample validation
- Detailed engineering

## PROJECT SUPPORT:

- Installation
- Commissioning of lightings and controls
- Warranty and Support

# CUSTOMIZE YOUR LIGHTING PRODUCT; WE DESIGN LIGHTING CONTROLS.



## RESEARCH AND DESIGN

Our engineering team leverages SSL expertise with application knowledge to assure that our products exceed customer expectations.



## WORLDWIDE MANUFACTURING PARTNERSHIPS

Having world class manufacturers providing latest technologies and quality testing ensures us to provide cost effective products meeting outstanding reliability and performance surpassing highest certification standards like ETL FCC CE cULus RoHS DLC Premium and more.



## HIGH PERFORMANCE POWER SUPPLIES USING *BEST IN CLASS* CONTROL

We integrate LED power supply development and apply differentiated DELIGHT control solutions across our luminaire offerings to improve control and performance.



## THERMAL OPTIMIZATION

Using advanced MATERIAL:s and technologies like patented heat sink pads in combination with mechanical and thermal modeling, DELIGHT luminaires are surpassing the boundaries of system illumination output and life expectancy.



## LEADING EDGE OPTICS

Our optical designs offer a wide range of high efficiency solutions targeting minimal glare, improved uniformity and optimized control to improve the quality of light.



## QUALITY

Our Products are backed by a rigorous product development process, state-of-the-art testing facilities and NVLAP certified labs which validate reliability prior to release. Our extensive manufacturing quality control and burn-in processes support our low defect rates.



# EXAGON™

Products with this symbol are compatible: **EXAGON™**

ONE NETWORK, ONE PLATFORM, INFINITE POSSIBILITIES.

EXAGON™ can integrate all of the lighting components of your property into one single platform. Features an API to push its information into third party software's like BAS.



## REMOTE GUI ACCESS



Empower your lighting systems with wireless MOTION SENSORS, dimming and tuning colour, in addition to remote scheduling and real time energy monitoring and alerts.

## GATEWAY



NEMA BOX CONTROLLER WIRELESS ACCESS POINT



STREET LIGHT PLUG CONTROLLER NODE



NEMA PLUG CONTROLLER MODULE



SENSORED FIXTURES



Web based for remote control	PHOTOCELL integration*
Smart phone and tablet friendly*	Motion detector*
Dashboard in real time*	Individual or group controls
Energy and usage reporting (M&V)	Data exportation (.csv, .pdf, .xlsx)
Alarm generation via sms and email	History log
Smart adaptive control strategies	
Dimming scheduling (better lighting LIFESPAN and savings)	
* Astronomical clock*	

Any suggestions?  
**We create custom designs.**

## KEY FEATURES

- Easy lighting and energy optimization
- Plug & Play, remotely configured
- WIRELESS: major installation cost savings
- Multilevel real time\* dashboards
- No recurring fees
- No hardware or software to maintain
- Smart adaptive controls
- Energy efficiency Measure and Verification tool
- Solar system integration (OPTIONAL)
- Can indoor / outdoor >IP66
- -40°C to +85°C
- AC / DC versions
- Compatible range 110-347VAC

# INDEX

LED OUTDOOR

14					
16					
17			19		
20					
21					
22					
25		26			
28					
30					
32					
34					
36					

LED INDOOR

40					
42					
43					
46					
48					
50					
52					
54					
56					

LED UNDERGROUND LIGHTING

60				

LED ARCHITECTURAL

64				
66				
68				
76				
78				
82				
84				
86				



# LED OUTDOOR



# STREET LIGHT



**NICHIA**  
EXAGON™ AREA/SITE

### ATLAS LED STREET LIGHT

- 1-10V dimming schedules and diagnostics
- NOMINAL POWER: 40W - 300W
- LED: Nichia
- Onboard NEMA PLUG
- Up to 140 LPW
- CRI: Ra > 70
- 5600 to 42000 Lm
- CCT: 4000, 5000, 5700
- WATERPROOF: IP 66
- RATED LIFE: L70 @ 150,000



**PHILIPS**  
EXAGON™ AREA/SITE

### ZEN LED STREET LIGHT

- 1-10V dimming schedules and diagnostics
- NOMINAL POWER: 60W - 280W
- LED: Philips® LUXEON®
- Onboard NEMA PLUG
- Up to 110 LPW
- CRI: Ra > 80
- 5200 - 36,400 Lumen
- CCT: 3000, 4000, 5000, 5700 or 6500K
- Waterproof IP 66



**PHILIPS LUXEON**  
EXAGON™ AREA/SITE

### ELEGANCE 80 LED STREET LIGHT

- NOMINAL VOLTAGE: AC 100-240V /277V, 50/60Hz
- NOMINAL WATTAGE: 40W-240W
- LUMEN OUTPUT: 4400-26400 Lm (+/- 5%)
- LED: Philips® LUXEON®
- CCT: 3000 - 6500K
- FIXTURE MATERIAL: Full Aluminium Body and PC Lens
- RATINGS: IP66, IK08
- LUMEN MAINTENANCE: > 100000 hours - L70, @25 °C (77 °F)
- FIXTURE INFO.: 504 x 316 x136 mm, 6.1 kg
- APERTURE DIAMETER: Φ60 mm



**CREE**  
EXAGON™ AREA/SITE

### STREET CHIC 90 LED STREET LIGHT

- NOMINAL VOLTAGE: AC 120- 277V, 347- 480V 50/60Hz
- 1-10V dimming schedules and diagnostics
- LED: CREE
- NOMINAL WATTAGE: 30W - 240W
- LUMEN OUTPUT: 3300- 19800 Lm (+/- 5%)
- CCT: 4000 - 5000K
- FIXTURE MATERIAL: Full Aluminium Body and PC Lens
- RATINGS: IP66, IK08
- LUMEN MAINTENANCE: > 100000 hours-L70, @25 °C (77 °F)
- FIXTURE MEASUREMENTS: 629 x 361 x 117 mm
- FIXTURE WEIGHT: 8.7 kg
- APERTURE DIAMETER: Φ60 mm



**PHILIPS LUXEON**  
EXAGON™ AREA/SITE

### ACTIVIA LED STREET LIGHT

- 1-10V dimming schedules and diagnostics
- NOMINAL POWER: 60W - 280W
- LED: Philips® LUXEON
- Onboard NEMA PLUG
- Up to 110 LPW
- CRI: Ra > 80
- 5200 - 36,400 Lm
- CCT: 3000, 4000, 5000, 5700 or 6500K
- Waterproof IP 66







**PHILIPS LUXEON**  
EXAGON™ AREA/SITE

### CORONA LED STREET LIGHT

- 1-10V dimming schedules and diagnostics
- NOMINAL POWER: 25W - 240W
- LED: Philips® LUXEON® Onboard NEMA PLUG
- Up to 120 LPW
- CRI: Ra > 70
- 5200 - 36,400 Lm
- CCT: 3000, 4000, 5000, 5700 or 6500K
- Waterproof IP 66



**CREE SAMSUNG LED**  
EXAGON™ AREA/SITE

### DOFIN LED STREET LIGHT

- 1-10V dimming schedules and diagnostics
- NOMINAL POWER: 25W - 240W
- LED: SAMSUNG / CREE
- Onboard NEMA PLUG
- Up to 120 LPW
- CRI: Ra > 70
- 3000 - 28800 Lm
- CCT: 3000, 4000, 5000, 5700 or 6500K
- Waterproof IP 66



**LUMILEDS CREE**  
EXAGON™ AREA/SITE

### ARIEL LED STREET LIGHT

- 1-10V dimming schedules and diagnostics
- NOMINAL POWER: 30W - 150W
- LED: Lumileds / CREE / Orsam
- Onboard NEMA PLUG
- DRIVER: Mean Well
- Up to 120 LPW
- CRI: Ra > 70
- 3600 - 18000 Lm
- CCT: 3000, 4000, 5000, 5700 or 6500K
- Waterproof IP 66



**CREE**  
EXAGON™ AREA/SITE

### VEGA LED STREET LIGHT

- 1-10V dimming schedules and diagnostics
- NOMINAL POWER: 25W - 240W
- LED: CREE
- Onboard NEMA PLUG
- Up to 130 LPW
- CRI: Ra > 70
- 3250 - 31200 Lm
- CCT: 3000, 4000, 5000, 5700 or 6500K
- Waterproof IP 66



**PHILIPS**  
EXAGON™ AREA/SITE

### OPTIMA LED STREET LIGHT

- 1-10V dimming schedules and diagnostics
- NOMINAL POWER: 20W - 50W
- LED: Philips 3030
- Onboard NEMA PLUG
- DRIVER: Inventronic
- Up to 130 LPW
- CRI: Ra > 70
- 2400 - 6000 Lm
- CCT: 3000, 4000, 5000, 5700 or 6500K
- Waterproof IP 67





# SOLAR STREET LIGHT



EXAGON™ AREA/SITE

## SKYLINE 30 SOLAR LED – STREET LIGHT

- LED NUMBER: 9 Units
- NOMINAL POWER: 15 W (available in 20W, 25W, 30W)
- SOLAR PANEL SPEC.: Monocrystal 45W/18V
- BATTERY SPEC.: 15AH / 12V
- CONSTANT WORKTIME AT FULL POWER: 12 Hours
- WORKTIME AT ENERGY-SAVING MODE(30%): 36 Hours
- CHARGE TIME: Max power 5~6 Hours
- CHARGE TEMPERATURE: <60°
- DISCHARGE TEMPERATURE: -20°~60°
- SWITCH LIGHTS SENSE THRESHOLD: on ≤10 LXS, off ≥15 LXS
- CCT: 3000,4000, 5000, 6000 K



PHILIPS BRIDGELUX  
EXAGON™ AREA/SITE

## SUNRAYS LED STREET LIGHT

- 1-10V dimming schedules and diagnostics
- Philips / CREE / Bridgelux / Orsam
- AC85-265V / 277V / DC10-28V
- NOMINAL POWER: 20W/ 30W / 50W / 60W
- LED: Cree / Bridgelux
- DRIVER: Mean Well
- Up to 110 LPW
- CRI: Ra > 80
- 2000- 6600 Lm
- CCT: 2700 - 7000K
- WATERPROOF IP 65
- BEAM ANGLE: 70 / 140



EXAGON™ AREA/SITE

## HORIZON 10 LED STREET LIGHT

- NOMINAL POWER: 10 W (available in 15W, 20W,30W, 40W, 50W)
- SOLAR PANEL SPEC.: Monocrystal 16.8W / 18V
- BATTERY Spec.: 9AH / 12V
- CONSTANT WORKTIME AT FULL POWER: 10 Hours
- WORKTIME AT ENERGY-SAVING MODE(25%): ≥40 Hours
- CHARGE TIME: Max power 5~6 Hours
- CHARGE TEMPERATURE: <60°
- DISCHARGE TEMPERATURE: -20°~60°
- SWITCH LIGHTS SENSE THRESHOLD: on ≤10 LXS, off ≥15 LXS
- LUMINOUS FLUX (FULL POWER): 1100 Lm (+Lumen tolerance +/- 5%)
- LIGHT TYPE: 1S
- CCT: 3000 - 6500K





# AREA AND PARKING LIGHT



PHILIPS LUMILEDS  
EXAGON™ AREA/SITE

**ARIA**  
LED AREA LIGHT

- NOMINAL VOLTAGE: AC 100-277V, 50/60Hz
- NOMINAL WATTAGE: 150-300W
- Efficiency up to 155 Lm/W
- LUMEN OUTPUT: 23250 - 46500 Lm
- LED: Philips® Lumileds
- CRI: > 70
- POWER FACTOR: 0.95+
- Dimension of 120W LED Flood Light
- CCT: 4000, 5000, 5700K
- LENS MATERIAL:S: Fire-proof PC
- HOUSING MATERIAL:S: Die Casting Aluminium
- RATINGS: IP65



PHILIPS LUMILEDS  
EXAGON™ AREA/SITE

**FLAVIA**  
LED AREA LIGHT

- 1-10V dimming schedules and diagnostics
- NOMINAL POWER: 90W - 480W
- CRI: Ra > 70
- 12600 to 67200 Lumen
- CCT: 5700K
- Up to 140 LPW
- DRIVER: Mean Well
- LED: Philips® Lumileds
- OPTIONAL: Photocell, Surge protector, Housing Colour
- IP RATING: IP65
- CONNECTOR: IP67



PHILIPS LUMILEDS  
EXAGON™ AREA/SITE

**AROMA**  
LED AREA LIGHT

- NOMINAL VOLTAGE: AC 100-277V, 50/60Hz
- NOMINAL WATTAGE: 35-150W
- Efficiency up to 140 Lm/W
- LUMEN OUTPUT: 4725-21000Lm
- LED: Philips® Lumileds
- CRI: > 70
- POWER FACTOR: 0.95+
- BEAM ANGLE: 150
- Dimension of 120W LED Flood Light
- CCT: 4000, 5000, 5700K
- LENS MATERIAL:S: Fire-proof PC
- RATINGS: IP65



PHILIPS LUMILEDS  
EXAGON™ AREA/SITE

**SAYNA**  
LED AREA LIGHT

- NOMINAL VOLTAGE: AC 120 - 277V, 347V, 50/60Hz
- NOMINAL WATTAGE: 150W
- LUMEN OUTPUT: 1500 Lm
- CRI > 85
- CCT: 2700 - 6700K
- FIXTURE MATERIAL: Full Aluminium Body and PC Lens
- POWER FACTOR (PF): > 0.94
- DRIVER EFFICIENCY: > 90%
- LED: Philips® Lumileds
- LED LUMINOUS EFFICIENCY: 100Lm/W
- LUMEN MAINTENANCE: > 50,000 hours-L70, @25 °C
- FIXTURE DIMENSIONS: L 273 \*W 227 \* H 185
- RATINGS: IP65
- PF > 0.95
- POWER EFFICIENCY: > 87%
- OPERATING TEMPERATURE: -40 ~ 45°C



EXAGON™ OUTDOOR OPTIONAL COLOURS

**TRINITY**  
LED ARCHITECTURAL-LANDSCAPE

- NOMINAL VOLTAGE: AC 110 - 120V, 50/60Hz
- 1-10V dimming schedules and diagnostics
- NOMINAL WATTAGE: 20 - 80W
- LUMEN OUTPUT: 2000 - 1000 Lm
- CRI: Ra > 70
- CCT: 2700 and 5000K
- LUMEN MAINTENANCE: > 50,000 hours- L70, @25 °C (77 °F)
- WORKING TEMPERATURE: -40°C-50°C
- WORKING AMBIENT HUMIDITY: 10%-85%
- POWER FACTOR: > 0.95





EXAGON™ AREA/SITE MEAN WELL

**NOVA 130**  
LED AREA LIGHT

- 1-10V dimming schedules and diagnostics
- NOMINAL POWER: 130W
- AC 100V - 2770V / 50 - 60Hz
- CRI: Ra > 80
- 17000 Lm
- CCT: 3000 - 6000K
- Up to 110 LPW
- HEATSINK: Magnesium Heatsink
- DRIVER: Mean Well
- SMD3030 LED CHIPS
- HEAT DISPEL: 3/4 heat dissipation area
- BEAM ANGLE: 120°
- PF: > 95
- WATERPROOF RATING: IP65



EXAGON™ AREA/SITE

**ETERNITY**  
LED SOLAR AREA LIGHT

- 1-10V dimming schedules and diagnostics
- NOMINAL POWER: 9 - 30W
- BATTERY TYPE: Rechargeable Li-ion battery
- SOLAR PANEL: Monocrystalline Silicon
- INSTALL HEIGHT: 3 - 4 m
- Solar Charging Time: 10 Hours
- LIGHTING MODE: 5 hrs 1005 light + 25% light till down
- MATERIAL: Aluminium Alloy + ABS



EXAGON™ AREA/SITE

**NANO**  
LED SOLAR AREA LIGHT

- 1-10V dimming schedules and diagnostics
- NOMINAL POWER: 9W
- BATTERY TYPE: Rechargeable Li-ion
- SOLAR PANEL: Monocrystalline Silicon
- INSTALL HEIGHT: 3 - 4 Meter
- SOLAR CHARGING TIME: 10 Hours
- LIGHTING MODE: 5 hrs 1005 light+25% light till down
- MATERIAL: Aluminium Alloy + ABS



EXAGON™ AREA/SITE

**TERA**  
LED AREA LIGHT

- 1-10V dimming schedules and diagnostics
- NOMINAL POWER: 9W
- LUMEN: 900 Lm
- BATTERY TYPE: Rechargeable Li-ion
- SOLAR PANEL: Monocrystalline Silicon
- INSTALL HEIGHT: 3 - 4 Meter
- SOLAR CHARGING TIME: 10 Hours
- LIGHTING MODE: 5 hrs 1005 light+25% light till down
- MATERIAL: Aluminium Alloy+ ABS
- WATERPROOF RATING: IP65





# OUTDOOR AREA LIGHTING



**PHILIPS LUMILEDS**  
EXAGON<sup>™</sup> AREA cULus DLC

## PARIS

WALL SCONCE

OPTIONAL COLOURS

- NOMINAL VOLTAGE: AC 90-305V, 50/60Hz
- 1-10V dimming schedules and diagnostics
- NOMINAL WATTAGE: 40-80W
- LED: Philips® Lumileds
- LUMEN EFFICACY: 120 Lm/W
- LUMEN OUTPUT: 4800 - 9600 Lm
- CRI: Ra > 70
- CCT: 2700 - 7000K
- LED QUANTITY: 384 pcs
- BEAM ANGLE: 110°
- FIXTURE MATERIAL: Aluminium
- RATINGS: IP65, IK08
- LUMEN MAINTENANCE:  
> 50000 hours - L70, @25 °C (77 °F)
- FIXTURE DIMENSION: 703 x 400 mm
- WARRANTY TIME: 5 Years



# FLOOD LIGHT



**PHILIPS LUMILEDS**  
EXAGON™ FLOOD

**ACADIA 120**  
LED FLOOD LIGHT

- NOMINAL VOLTAGE: AC 100- 240V / 277V, 50/60Hz
- NOMINAL WATTAGE: 120W
- LUMEN OUTPUT: 12,000 Lm (+/- 5%)
- PHOTOMETRIC TYPE: 60º, 90º, 110º
- CRI > 70
- LED: Philips® Lumileds
- CCT: 4000, 5000, 5700K
- FIXTURE MATERIAL: Full Aluminium Body and PC Lens
- RATINGS: IP66, IK08
- LUMEN MAINTENANCE: > 100000 hours - L70, @25 °C (77 °F)
- FIXTURE SIZE: 439 x 340 x 259 mm
- FIXTURE WEIGHT: 5.4 kg



**PHILIPS**  
EXAGON™ FLOOD **MW**

**SIMPLICITY**  
LED FLOOD LIGHT

- NOMINAL VOLTAGE: AC 120-277V, 347V, 50/60Hz
- NOMINAL WATTAGE: 50 - 250W
- LUMEN OUTPUT: 5000 - 21000 Lm (+/- 5%)
- CRI > 80
- CCT: 3000 - 6500K
- LED: Philips SMD 3030
- FIXTURE MATERIAL: Full Aluminium Body and PC Lens
- RATINGS: IP65
- DRIVER: Mean Well / Philips
- POWER FACTOR (PF): > 0.94
- DRIVER EFFICIENCY: > 90%
- LED LUMINOUS EFFICIENCY: 100-105Lm/W
- LUMEN MAINTENANCE: > 50,000 hours-L70, @25 °C
- FIXTURE DIMENSIONS Ø320\*W380\*H220
- FIXTURE WEIGHT: 2.5 kg



**CREE**  
EXAGON™ FLOOD **MW**

**AELIA 50**  
LED FLOOD LIGHT

- NOMINAL VOLTAGE: AC 90V - 305V / 12-24V DC
- NOMINAL WATTAGE: 50W
- POWER EFFICIENCY: > 90%
- POWER FACTOR: > 0.95
- SURGE PRODUCTION CLASS: 3kV / 6kV / 10kV / 20kV
- LAMP RATED LUMINOUS EFFICIENCY: 100 Lm/W Lamp Rated
- LUMEN OUTPUT: 5000 Lm
- LED: CREE COB
- DRIVER: Mean Well
- Ra: 70 / 80 / 90
- CCT: 3000 / 4000 / 5700K
- OPERATING TEMPERATURE: -40 to +85 C
- OPERATING HUMIDITY: 10%~90%RH
- BODY AND SHELL MATERIALS: Aluminium Alloy
- IP RATING: IP65





# STADIUM LIGHT



EPISTAR BRIDGELUX  
EXAGON™ STADIUM

## GLORY LED STADIUM LIGHT

- POWER CONSUMPTION: 480W
- Available in 80W - 1000W
- NOMINAL LUMEN: 43200 - 57600 Lm
- LUMINOUS FLUX: 90 - 120 Lm/W
- CCT: 3000 - 5700K
- CRI: Ra > 83
- L70 Maintenance rate at 50,000 hours
- POWER FACTOR > 95 (%)
- OPERATING INPUT VOLTAGE: 110 - 277 VAC
- VIEWING ANGLE: 110
- LED: Epistar SMD 2835
- OPERATING TEMPERATURE RANGE: -30 to 45 (°C)
- OPERATING HUMIDITY: 20% - 70% (RH)
- INGRESS PROTECTION CLASSIFICATION: IP 65



EXAGON™ STADIUM

## GIANT 480 LED STADIUM LIGHT

- NOMINAL VOLTAGE: AC 249 - 528V / 277V, 50/60Hz
- NOMINAL WATTAGE: 300 - 400W
- LUMEN OUTPUT: 31500-42000 Lm (+/- 5%)
- LED CHIP: EMC3030
- CRI > 70
- CCT: 3000 - 6500K
- FIXTURE MATERIAL: Full Aluminium Body and PC Lens
- RATINGS: IP65
- POWER FACTOR (PF) > 0.94
- DRIVER EFFICIENCY: > 90%
- LED LUMINOUS EFFICIENCY: 100 - 105 Lm/W
- LUMEN MAINTENANCE: > 50,000 hours - L70, @25 °C
- FIXTURE DIMENSIONS: Ø524\*W282\*
- FIXTURE WEIGHT: 6.2 kg





# LANDSCAPE



**CREE**   
**EXAGON™** **OUTDOOR**

## VALERIA LED LANDSCAPE

- 1-10V dimming schedules and diagnostics
- NOMINAL POWER: 17 W
- AC 220-240V / 50-60Hz
- CRI: Ra > 80
- LUMEN: 1463 Lm
- LED CHIP: CREE
- CCT: 3000 - 6000K
- Up to 86 LPW
- HEATSINK: Magnesium Heatsink
- HEAT DISSIPATION: 3/4 heat dissipation area
- BEAM ANGLE: 100°
- PF > 95
- WATERPROOF RATING: IP65
- Safety Class I



**CREE**   
**EXAGON™** **OUTDOOR**

## PORCIA LED LANDSCAPE

- 1-10V dimming schedules and diagnostics
- NOMINAL POWER: 3W RGB
- LED CHIP: CREE
- BATTERY: Rechargeable Li-ion battery
- SOLAR PANEL: Monocrystalline Silicon
- SOLAR CHARGING TIME: 10 Hours
- LIGHTING MODE:  
5 hrs 100% light + 25% light till down
- MATERIAL: Aluminium Alloy + ABS
- WATERPROOF RATING: IP65



**CREE**   
**EXAGON™** **OUTDOOR**

## RUFINA LED LANDSCAPE

- 1-10V dimming schedules and diagnostics
- NOMINAL POWER: 10 - 30W
- LED: CREE
- AC 85 - 265V
- CRI: Ra > 80
- 1200 - 1300 Lm
- CCT: 3000 - 6000K
- Up to 80 LPW
- BEAM ANGLE: 53°
- LIFESPAN > 30000 hrs
- PF > 95
- WORKING AMBIENT TEMPERATURE: -25°-50°
- Aluminium die-casting body
- Clear/frost PC diffuser
- FIXTURE DIMENSION:  
°210 mm x 750 mm(H) °210 mm x 220 mm(H)
- WATERPROOF RATING: IP 54



**CREE**   
**EXAGON™** **OUTDOOR**

## JULIA LED LANDSCAPE

- 1- 10V dimming schedules and diagnostics
- NOMINAL POWER: 6 - 18W
- LED: CREE
- AC 85 - 265V
- CRI: Ra > 80
- 720 - 1800 Lm
- CCT: 3000 - 6000K
- Up to 80 LPW
- BEAM ANGLE: 119°
- LIFESPAN > 30000 hrs
- PF > 95
- WORKING AMBIENT TEMPERATURE: -25°-50°
- Aluminium die-casting body
- Clear/frost PC diffuser
- FIXTURE DIMENSION:  
Φ130mm x 350 mm(H) Ø Φ130mm x 600mm(H)
- WATERPROOF RATING: IP 54





# WALL PACK



**PHILIPS LUMILEDS**

EXAGON™ WALL 

**ADRIANA**

LED COMMERCIAL WALL PACK

- NOMINAL VOLTAGE: AC 120- 277V
- 1-10V dimming schedules and diagnostics
- NOMINAL WATTAGE: 80W - 120W
- 1900 - 3150 Lumen
- 95 - 105 Lm/W
- CCT: 3000 - 4000 - 5000K
- CRI: Ra > 70
- LED: Philips Lumileds
- BEAM ANGLE: 110
- DRIVER: Mean Well IP65
- OPERATING TEMPERATURE: -20 to +40 C
- STORAGE TEMPERATURE: -40 to +85 C
- OPERATING HUMIDITY: 10% - 80%
- STORAGE HUMIDITY: 10% - 80 %
- LIFESPAN > 50,000 hrs



**PHILIPS LUMILEDS**

EXAGON™ WALL 

**HOPE**

LED COMMERCIAL WALL PACK

- NOMINAL VOLTAGE: AC 120- 277V
- 1-10V dimming schedules and diagnostics
- NOMINAL WATTAGE: 20W - 30W
- 1900 - 3150 Lumen
- 95 - 105 Lm/W
- CCT: 3000 - 4000 - 5000K
- CRI: Ra > 70
- LED: Philips Lumileds
- BEAM ANGLE: 90
- DRIVER: Mean Well IP65
- OPERATING TEMPERATURE: -20 to + 40 C
- STORAGE TEMPERATURE: -40 to + 85 C
- OPERATING HUMIDITY: 10% - 80%
- STORAGE HUMIDITY: 10% - 80 %
- LIFESPAN > 50,000 hrs



**PHILIPS LUMILEDS**

EXAGON™ WALL 

**REBECCA**

LED WALL PACK

- NOMINAL VOLTAGE: AC 120- 277V
- 1-10V dimming schedules and diagnostics
- NOMINAL WATTAGE: 25W - 120W
- 1900 - 3150 Lumen
- 95 - 105 Lm/W
- CCT: 3000 - 4000 - 5000K
- CRI: Ra > 70
- LED: SMD
- BEAM ANGLE: 110
- DRIVER: Mean Well IP65
- OPERATING TEMPERATURE: -20 to + 40 C
- STORAGE TEMPERATURE: -40 to + 85 C
- OPERATING HUMIDITY: 10% - 80%
- STORAGE HUMIDITY: 10% - 80 %
- LIFESPAN > 50,000 hrs



**CREE**

EXAGON™ WALL

**KARMA**

LED SOLAR WALL PACK

- 1-10V dimming schedules and diagnostics
- NOMINAL WATTAGE: 16W
- LUMINOUS FLUX: 500 Lm/W
- CCT: 3000 - 4000 - 5000K
- CRI: Ra > 70
- LED CHIPS: CREE
- BATTERY: DC 12V 3.5W
- High pressure aluminium die cast housing, anti-static powder painting.
- Solar panels and lithium batteries are included inside of the fixture - no city power consumption.
- Microwave sensor compatibility.
- Tempered glass lens, high efficiency cooling system.
- Standard mounting connector, easy to maintain.





# WALL WASHER



**CREE**   
**EXAGON™ WALL WASHER**

## FELIX LED WALL WASHER

- 1-10V dimming schedules and diagnostics
- POWER: 400W
- LED QUANTITY: 25 pcs
- LED CHIPS: CREE
- CHANNEL: 19 / 29 / 117 three channels modes
- 16 million colour in DMX RGB mode
- BEAM ANGLE: 7°
- COMMUNICATION: DMX512 or DMX512a
- OPTICS: optical grade pc collimator
- MAX THROW DISTANCE: 20 meter max
- HOUSING: molded aluminium alloy with black powder coat finish
- CONTROL: DMX / Master-slave / Auto / Sound activated
- AMBIENT TEMPERATURE: -20°~40°
- HUMIDITY RANGE: 0% to 95% non-condensing humidity



**CREE**   
**EXAGON™ WALL WASHER**

## SABRINA LED WALL WASHER

- NOMINAL VOLTAGE: AC 100 - 277V, 50/60Hz
- 1-10V dimming schedules and diagnostics
- LIGHT SOURCE: 36 x 1W LED
- POWER: 36W
- LED QUANTITY: 36 pcs
- COLOUR: R/G/B/Y/W or full colour
- 16 million colour in DMX RGB mode
- BEAM ANGLE: 15°/ 30°/ 45° symmetrical light distribution
- COMMUNICATION: DMX512 or DMX512a
- VOLTAGE: 90 - 264V AC
- OPTICS: optical grade pc collimator
- MAX THROW DISTANCE: 20 meter max
- AUTO PROGRAM: 10 preset colour changing programs, selectable by user
- AMBIENT TEMPERATURE: -20°~40°
- HUMIDITY RANGE: 0% to 95% non-condensing humidity
- LIFE SPAN: 50,000hrs



**CREE**   
**EXAGON™ WALL WASHER**

## STARWARS LED WALL WASHER

- 1-10V dimming schedules and diagnostics
- POWER: 140W
- LED QUANTITY: 9 pcs
- LED CHIPS: RGBW CREE 10W
- CHANNEL: 19 / 29 / 117 three channels modes
- 16 million colour in DMX RGB mode
- BEAM ANGLE: 5°
- COMMUNICATION: DMX512 or DMX512a
- OPTICS: optical grade pc collimator
- AMBIENT TEMPERATURE: -20°~40°
- HUMIDITY RANGE: 0% to 95% non-condensing humidity
- LIFE SPAN: 20,000 hrs Rated
- IP GRADE: IP65



**CREE**   
**EXAGON™ WALL WASHER**

## SOFIAN LED WALL WASHER

- NOMINAL VOLTAGE: AC 90 - 260V, 50/60Hz
- 1-10V dimming schedules and diagnostics
- POWER: 400W
- LED: 25 pcs
- LED CHIPS: CREE
- CHANNEL: 19 / 29 / 117 three channels modes
- 16 million colour in DMX RGB mode
- BEAM ANGLE: 7°
- COMMUNICATION: DMX512 or DMX512a
- OPTICS: optical grade pc collimator
- MAX THROW DISTANCE: 20 meter max
- HOUSING: molded aluminium alloy with black powder coat finish
- CONTROL: DMX / Master-slave / Auto / Sound activated
- AMBIENT TEMPERATURE: -20°~40°
- HUMIDITY RANGE: 0% to 95% non-condensing humidity
- LIFE SPAN: 50,000 hrs
- IP GRADE: IP65





# CANOPY



CREE ⇄ PHILIPS LUMILEDS  
EXAGON™ OVERHEAD

## FLAKE GAS STATION LED CANOPY

- NOMINAL VOLTAGE: AC 100- 277V, 50/60Hz
- 1-10V dimming schedules and diagnostics
- NOMINAL WATTAGE: 80W - 120W
- LUMEN EFFICACY: 90 - 105 Lm/W
- LUMEN OUTPUT: 7200 - 12600 Lm
- CRI: Ra > 70
- CCT: 3000- 5000K
- LED BRAND: CREE / Philips / Bridgelux
- LED QUANTITY: 384 PCS
- BEAM ANGLE: 110°
- FIXTURE MATERIAL: Aluminium
- RATINGS: IP 67
- LUMEN MAINTENANCE: > 50000 hours-L70, @25 °C (77 °F)
- FIXTURE DIMENSION: 400 x 348 x 101.8 mm



EPISTAR  
EXAGON™ OVERHEAD

## CUBE LED CANOPY

- 1-10V dimming schedules and diagnostics
- NOMINAL VOLTAGE: AC 100-277V, 50/60Hz
- DRIVER: Mean Well IP65
- POWER: 45 - 150W
- Lumen Efficiency: 100 - 110 Lm/W
- LUMEN OUTPUT: 4500 - 16500 Lm
- CCT: 3000- 5000K
- LED: Epistar 2835
- No UV or IR in the beam
- CRI: > 80
- Easy to install and operate
- Energy saving, Long Lifespan
- Light is soft and uniform, Safe to eyes
- Instant start, NO flickering, NO humming
- Green and eco-friendly without mercury.
- WATERPROOF RATING: IP65
- HOUSING: Aluminium



NICHIA  
EXAGON™ OVERHEAD

## BLANC COMMERCIAL GRADE LED CANOPY

- 1-10V dimming schedules and diagnostics
- DRIVER: Mean Well
- No UV or IR in the beam
- Easy to install and operate
- Energy saving, Long Lifespan
- Light is soft and uniform, Safe to eyes
- Instant start, NO flickering, NO humming
- Green and eco-friendly without mercury.
- LUMEN: 15000 Lm - 16000 Lm
- WATERPROOF RATING: IP65
- HOUSING: Aluminium
- LED BRAND: Nichia 3030
- VIEWING ANGLE: 110°



LUXEON  
EXAGON™ OVERHEAD

## GLIMMER 45W LED CANOPY

- 1-10V dimming schedules and diagnostics
- NOMINAL VOLTAGE: AC 100 - 277V, 50/60Hz
- NOMINAL WATTAGE: 45W
- LUMEN OUTPUT: 4500 Lm
- CRI > 80
- DRIVER: Mean Well IP65
- No UV or IR in the beam
- Easy to install and operate
- Energy saving, Long Lifespan
- Light is soft and uniform, Safe to eyes
- Instant start, NO flickering, NO humming
- Green and eco-friendly without mercury.
- 4500 - 5000 Lumen
- WATERPROOF RATING: IP65
- HOUSING: Aluminium
- LED BRAND: LUXEON 3030
- VIEWING ANGLE: 120°

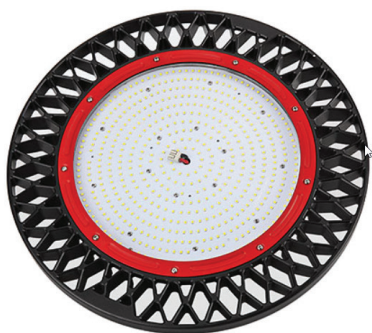




# LED INDOOR



# HIGH BAY



**PHILIPS LUMILEDS**

EXAGON™ OVERHEAD 

**SOURCE**

UFO HIGH BAY

- 1-10V dimming schedules and diagnostics
- NOMINAL POWER: 100W - 250W
- CRI: Ra > 70
- Lumen 11000-27500
- Colour Temperatures: 3000, 4000, 5000, 5700K
- Up to 110 LPW
- HEATSINK: Magnesium Heatsink
- DRIVER: Mean Well
- LED CHIP: Philips Lumileds
- Heat Dispel: 3/4 heat dissipation area
- BEAM ANGLE 60 / 90 / 110
- WATERPROOF RATING: IP65
- Recommendation



**EPISTAR**

EXAGON™ OVERHEAD

**STAR**

UFO HIGHBAY

- NOMINAL VOLTAGE: AC 120 - 277V
- 1-10V dimming schedules and diagnostics
- NOMINAL WATTAGE: 200W - 240W
- 26000 - 31200 Lumen
- 130 Lm/W
- CCT: 3000 - 7500K 5000K
- CRI: Ra > 80
- BEAM ANGLE: 110
- Driver: Sosen
- LED CHIP: Epistar
- POWER FACTOR: > 0.9
- THD: < 20%



**PHILIPS LUMILEDS**

EXAGON™ OVERHEAD 

**MARINE 75**

COMMERCIAL GRADE  
HIGH EFFICIENCY HIGH BAY

- 1-10V dimming schedules and diagnostics
- NOMINAL POWER: 75W - 200W
- CRI: Ra > 70
- Lumen 7500 - 20000
- CCT: 3000, 4000, 5000, 5700K
- Up to 150 LPW
- HEATSINK: Magnesium Heatsink
- DRIVER: Mean Well
- LED CHIP: Philips Lumileds
- BEAM ANGLE: 150\*85 Degree° Type III
- HEAT DISPEL: 3/4 heat dissipation area
- SLIM & SMALL: 558 x 450 x 116 mm
- EASY TO INSTALL: 3 OPTIONAL install brackets
- OPTIONAL: PHOTOCCELL, Surge protector
- BEAM ANGLE: 105°
- WATERPROOF RATING: IP65



**CREE**

EXAGON™ AREA/SITE

**GRANT**

LED HIGHBAY

- NOMINAL VOLTAGE: AC 110 - 240V, 50/60Hz
- E40 standard version to replace the high power CFL bulbs used in industrial applications
- 1-10V dimming schedules and diagnostics
- NOMINAL WATTAGE: 30 - 60W
- LUMEN OUTPUT: 3000 - 6000 Lm
- CRI: Ra > 70
- LED CHIP: CREE
- CCT: 3000 and 5000K
- LUMEN MAINTENANCE: > 50000 hours-L70, @25 °C (77 °F)
- POWER FACTOR > 0.95
- APPLICATION: Factory, gymnasium, marine, airport, subway



**CREE**

EXAGON™ AREA/SITE

**GEORGIA**

LED HIGHBAY

- NOMINAL VOLTAGE: AC 95 - 305V, 50/60Hz
- E40 standard version to replace the high power CFL bulbs used in industrial applications
- 1-10V dimming schedules and diagnostics
- NOMINAL WATTAGE: 120 - 150W
- LUMEN OUTPUT: 12000 - 15000 Lm
- LED CHIP: CREE
- CRI: Ra > 70
- CCT: 3000 and 5000K
- LUMEN MAINTENANCE: > 50000 hours-L70, @25 °C (77 °F)
- POWER FACTOR: > 0.95





# LINEAR HIGH BAY



**OSRAM**  
EXAGON™ INDOOR

**VALENCIA 100**  
COMMERCIAL GRADE  
LED LINEAR HIGHBAY

- NOMINAL VOLTAGE: AC 100-277V/347V, 50/60Hz
- 1-10V dimming schedules and diagnostics
- NOMINAL WATTAGE: 50W - 100W
- LUMEN EFFICACY: 118 Lm/W
- LUMEN OUTPUT: 3000 - 5000 Lm
- CRI: Ra > 93
- CCT: 3500-5700K
- LED: Osram
- BEAM ANGLE: 110°
- FIXTURE MATERIAL: Aluminium
- POWER FACTOR (PF): > 0.95
- DRIVER EFFICIENCY: > 90%
- LUMEN MAINTENANCE: > 50000 hours-L70, @25 °C (77 °F)



EXAGON™ INDOOR

**LIBERTY 150**  
COMMERCIAL GRADE  
LED LINEAR HIGHBAY

- NOMINAL VOLTAGE: AC 100-277V, 50/60Hz
- 1-10V dimming schedules and diagnostics
- NOMINAL WATTAGE: 50W - 200W
- LUMEN EFFICACY: 120-135Lm/W
- LUMEN OUTPUT: 6000-27000 Lm
- CRI: Ra > 70
- CCT: 3500 - 5700K
- LED: SMD 3030
- BEAM ANGLE: 90°
- FIXTURE MATERIAL: Aluminium
- IP: 66
- POWER FACTOR (PF) > 0.95
- DRIVER EFFICIENCY > 90%
- HOUSING COLOUR: Black, White, Silver
- LUMEN MAINTENANCE: > 50000 hours- L70, @25 °C (77 °F)



**PHILIPS LUMILEDS**  
EXAGON™ INDOOR MEAN WELL

**MATCH III**  
COMMERCIAL GRADE  
LED LINEAR HIGHBAY

- 1-10V dimming schedules and diagnostics
- NOMINAL POWER: 100W
- Philips 3030 LED
- System efficiency Up to 120 LPW
- CRI: Ra > 70
- 12000 Lumen
- CCT: 3000, 4000, 5000, 5700 or 6500K
- Original modular design
- LED: Philips Lumileds
- DRIVER: Mean Well
- IP66 & IK08 grade
- Can be used as Highbay Light and Floodlight



**BRIDGELUX**  
EXAGON™ INDOOR MEAN WELL

**IMPERIAL 60**  
COMMERCIAL GRADE  
LED LINEAR HIGHBAY

- NOMINAL WATTAGE: 30W - 120W
- INPUT VOLTAGE: AC 100 - 277V, 47 - 63Hz
- OPTIMAL OPERATING TEMPERATURE: -40° to +50°
- POWER FACTOR (PF): > 0.95
- THD < 15%
- LED: Bridgelux
- DRIVER EFFICIENCY: > 90%
- LUMEN EFFICIENCY: 100 Lm/W
- LUMEN OUTPUT: 3000 - 12000 Lm (Lumen tolerance ±-5%)
- LIGHT DISTRIBUTION CURVE: TYPE III/II
- CRI: > 70
- CCT: 3000, 4000, 5000K
- WATERPROOF: IP 65
- RATED LIFE: L70 @ 150,000



**EPISTAR**  
EXAGON™ INDOOR / RETAIL

**STRENGTH**  
LED LINEAR HIGHBAY

- NOMINAL VOLTAGE: AC 100 - 277V, 50/60Hz
- 1-10V dimming schedules and diagnostics
- NOMINAL WATTAGE: 100 - 300W
- LUMEN EFFICACY: 100 Lm/W
- LUMEN OUTPUT: 6500 - 7200 Lm
- CRI: Ra > 93
- CCT: 3500 - 5700K
- LED BRAND: Epistar SMD 2835
- LED QUANTITY: 384 pcs
- BEAM ANGLE: 110°
- FIXTURE MATERIAL: Aluminium
- RATINGS: IP52
- LUMEN MAINTENANCE: > 50000 hours- L70, @25 °C (77 °F)
- FIXTURE DIMENSION: 603 X 1213 X 58 mm
- WARRANTY TIME: 5 Years





EXAGON<sup>™</sup> ARCHITECTURAL MW<sup>™</sup> MEAN WELL

### BALA LED SUSPENDED LIGHT

- NOMINAL VOLTAGE: AC 120 - 277V
- 1-10V dimming schedules and diagnostics
- END CAPS: Flat end cap provides a clean finish
- NOMINAL WATTAGE: 120W
- 12000 Lm
- EFFICIENCY: 100 Lm/W
- CCT: 3000 - 5000K
- CRI: Ra > 82
- BEAM ANGLE: 120
- DRIVER: Mean Well IP65
- POWER FACTOR: > 0.9
- THD: < 20%
- FINISH: Durable, low gloss, textured powder coated finish
- LENGTHS: 2' and 4' form
- HOUSING: 20 gauge cold-rolled steel construction
- Occupancy sensor available





# TRI-PROOF AND TUBE



**EPISTAR**

EXAGON™ OVERHEAD MW MEAN WELL

**PEACE**

COMMERCIAL GRADE TRI-PROOF

- NOMINAL VOLTAGE: AC 100-240V / 277V, 50/60Hz
- 1-10V dimming schedules and diagnostics
- NOMINAL WATTAGE: 20W - 65W
- 2100 to 6825 Lumen
- LED: Epistar SMD2835
- CCT: 3000 - 4000 - 5000 - 6000K
- CRI: Ra > 70
- BEAM ANGLE: 110
- DRIVER: Mean Well IP65



**EPISTAR**

EXAGON™ OVERHEAD MW MEAN WELL

**CRYSTAL T8**

LED TUBE

- NOMINAL VOLTAGE: AC 100 - 240V / 277V, 50/60Hz
- 1-10V dimming schedules and diagnostics
- NOMINAL WATTAGE: 12 - 18W
- NOMINAL LUMEN: 1440 - 2160(Lm )
- LUMINOUS FLUX: 120 (Lm/W)
- CCT: 3000 - 5000K
- LED: Epistar SMD2835
- CRI: Ra > 80
- Work with or without electronic ballast
- POWER FACTOR: > 90 (%)
- PC available in Clear or Frosted



EXAGON™ OVERHEAD MW MEAN WELL

**LINE**

COMMERCIAL GRADE TRI-PROOF

- NOMINAL VOLTAGE: AC 100 - 240V / 277V, 50/60Hz
- 1-10V dimming schedules and diagnostics
- NOMINAL WATTAGE: 20W - 65W
- 2100 to 6825 Lumen
- CCT: 3000 - 4000 - 5000 - 6000K
- CRI: Ra > 80
- BEAM ANGLE: 120
- DRIVER: Mean Well IP65



EXAGON™ OVERHEAD MW MEAN WELL

**MINI LINE**

COMMERCIAL GRADE TRI-PROOF

- NOMINAL VOLTAGE: AC 100 - 240V / 277V, 50/60Hz
- 1- 10V dimming schedules and diagnostics
- NOMINAL WATTAGE: 20W - 30W
- 1900 - 2850 Lumen
- CCT: 3000 - 4000 - 5000 - 6000K
- CRI: Ra > 80
- BEAM ANGLE: 120
- DRIVER: Mean Well IP65





INDOOR / PANEL

# PANEL

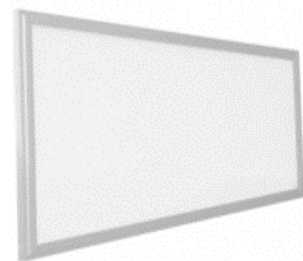
LED INDOOR / DOWNLIGHT



**EPISTAR**  
EXAGON™ INDOOR / RETAIL

## OCEANA LED PANEL

- NOMINAL VOLTAGE:  
AC 100 - 240V / 277V, 50/60Hz
- 1-10V dimming schedules and diagnostics
- NOMINAL WATTAGE: 8W - 22W
- LUMEN EFFICACY: 80 Lm/W
- LUMEN OUTPUT: 640 - 1760 Lm
- CRI: Ra > 80
- CCT: 3000 - 5000K
- LED Brand: Epistar SMD 2835
- LED Quantity: 384 PCS
- VIEWING ANGLE: 120°
- FIXTURE MATERIAL: Aluminium
- LUMEN MAINTENANCE:  
> 50000 hours-L70, @25 °C (77 °F)



**EPISTAR**  
EXAGON™ INDOOR / RETAIL

## PURE II 2'X4' LED PANEL

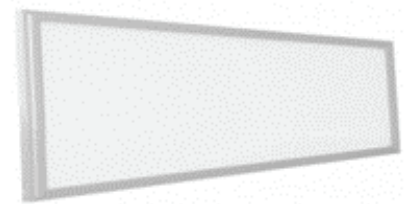
- NOMINAL VOLTAGE:  
AC 100 - 240V / 277V, 50/60Hz
- 1-10V dimming schedules and diagnostics
- NOMINAL WATTAGE: 40W
- LUMEN EFFICACY: 130 Lm/W
- LUMEN OUTPUT: 5200 Lm
- CRI: Ra > 80
- CCT: 3000 - 5000K
- LED Brand: Epistar SMD 2835
- VIEWING ANGLE: 120°
- FIXTURE MATERIAL: Aluminium
- LUMEN MAINTENANCE:  
> 50000 hours-L70, @25 °C (77 °F)
- FIXTURE DIMENSION:  
300 X 1213 X 58 mm



**EPISTAR**  
EXAGON™ INDOOR / RETAIL

## PURE SQUARE 2'X2' LED PANEL

- NOMINAL VOLTAGE:  
AC 100-240V / 277V, 50/60Hz
- 1-10V dimming schedules and diagnostics
- NOMINAL WATTAGE: 40W
- LUMEN EFFICACY: 130 Lm/W
- LUMEN OUTPUT: 5200 Lm
- CRI: Ra > 80
- CCT: 3000 - 5000K
- LED Brand: Epistar SMD 2835
- VIEWING ANGLE: 120°
- FIXTURE MATERIAL: Aluminium
- LUMEN MAINTENANCE:  
> 50000 hours-L70, @25 °C (77 °F)
- FIXTURE DIMENSION:  
603 X 1213 X 58 mm



**EPISTAR**  
EXAGON™ INDOOR / RETAIL

## PURE 1'X4' LED PANEL

- NOMINAL VOLTAGE:  
AC 100 - 240V / 277V, 50/60Hz
- 1-10V dimming schedules and diagnostics
- NOMINAL WATTAGE: 40W
- LUMEN EFFICACY: 130 Lm/W
- LUMEN OUTPUT: 5200 Lm
- CRI: Ra > 80
- CCT: 3000 - 5000K
- LED BRAND: Epistar SMD 2835
- VIEWING ANGLE: 120°
- FIXTURE MATERIAL: Aluminium
- LUMEN MAINTENANCE:  
> 50000 hours-L70, @25 °C (77 °F)
- FIXTURE DIMENSION:  
600 X 600 X 58 mm





# TROFFER



**LG**  
EXAGON™ INDOOR / RETAIL MEAN WELL

## HARMONY LED TROFFER

- NOMINAL VOLTAGE: AC 120 - 277V, 50/60Hz
- 1-10V dimming schedules and diagnostics
- NOMINAL WATTAGE: 140W
- LUMEN EFFICACY: 125 Lm/W
- LUMEN OUTPUT: 17500 Lm
- CRI: Ra > 80
- CCT: 4000, 5000, 5700K
- LED BRAND: LG
- BEAM ANGLE: 110°
- FIXTURE MATERIAL: White Aluminium
- RATINGS: IP 65
- LUMEN MAINTENANCE: > 50000 hours - L70, @25 °C (77 °F)
- DRIVER: Mean Well IP65
- High transparency and UV resistant polycarbonate lens
- PHOTOCELL: OPTIONAL
- MOTION SENSOR: OPTIONAL
- Bronze/White finish standard
- 5 years warranty



**OSRAM**  
EXAGON™ INDOOR / RETAIL

## SEANA LED TROFFER

- Voltage: AC 100 - 277V (347V OPTIONAL) 50/60Hz
- 1-10V dimming schedules and diagnostics
- NOMINAL WATTAGE: 24 - 68 W
- LUMEN EFFICACY: 110 Lm/W
- LUMEN OUTPUT: 2640 - 7480 Lm
- CRI: Ra > 80
- CCT: 3000 - 5000K
- LED BRAND: Osram
- VIEWING ANGLE: 120°
- FIXTURE DIMENSION: Available in 1x4, 2x2 and 2x4
- Aluminium
- LUMEN MAINTENANCE: > 50000 hours-L70, @25 °C (77 °F)
- Linear ribbed acrylic diffusers
- Ideal for installation in T-bar grid or drop-in ceilings



**EPISTAR**  
EXAGON™ INDOOR / RETAIL

## SERENITY LED TROFFER RETROFIT KITS

- NOMINAL VOLTAGE: AC 100 - 240V / 277V, 50/60Hz
- 1-10V dimming schedules and diagnostics
- NOMINAL WATTAGE: 8W - 22W
- LUMEN EFFICACY: 80 Lm/W
- LUMEN OUTPUT: 640 - 1760 Lm
- CRI: Ra > 80
- CCT: 3000 - 5000K
- LED BRAND: Epistar SMD 2835
- LED QUANTITY: 384 PCS
- VIEWING ANGLE: 120°
- FIXTURE MATERIAL: Aluminium
- LUMEN MAINTENANCE: > 50000 hours-L70, @25 °C (77 °F)





# DOWNLIGHT



**BRIDGELUX**  
EXAGON™ INDOOR / RETAIL OPTIONAL COLOURS

## EVA LED DOWNLIGHT

- NOMINAL VOLTAGE: AC 100-240V, 50/60Hz
- 1-10V dimming schedules and diagnostics
- NOMINAL WATTAGE: 24W
- LUMEN EFFICACY: 100 Lm/W
- LUMEN OUTPUT: 1875-2225 Lm
- CRI: Ra > 80
- CCT: 2700 - 5000K
- LED BRAND: Bridgelux
- BEAM ANGLE: 20°/40°
- Available in white and silver
- WARRANTY TIME: 5 Years



**EXAGON™** INDOOR / RETAIL OPTIONAL COLOURS

## ANGLE LED DOWNLIGHT

- NOMINAL VOLTAGE: AC 100 - 240V, 50/60Hz
- 1-10V dimming schedules and diagnostics
- NOMINAL WATTAGE: 9W (available in 12W)
- LUMEN EFFICACY: up to 99 Lm/W
- LUMEN OUTPUT: 535 - 892 Lm
- CRI: Ra > 80
- CCT: 2700 - 5000K
- LED: SMD 5630
- BEAM ANGLE: 90°
- LUMEN MAINTENANCE: > 50000 hours-L70, @25 °C (77 °F)
- Available in white and silver
- WARRANTY TIME: 5 Years



**EXAGON™** INDOOR / RETAIL OPTIONAL COLOURS

## DINA LED DOWNLIGHT

- NOMINAL VOLTAGE: AC 100-240V / 277V, 50/60Hz
- 1-10V dimming schedules and diagnostics
- NOMINAL WATTAGE: 9W (available in 12 W)
- LUMEN EFFICACY: up to 99 Lm/W
- LUMEN OUTPUT: 535-892 Lm
- CRI: Ra > 80
- CCT: 2700 - 5000K
- LED: SMD 5630
- BEAM ANGLE: 90°
- LUMEN MAINTENANCE: > 50000 hours-L70, @25 °C (77 °F)
- Available in white and silver
- WARRANTY TIME: 5 Years



**BRIDGELUX**  
EXAGON™ INDOOR / RETAIL OPTIONAL COLOURS

## RITA LED DOWNLIGHT

- NOMINAL VOLTAGE: AC 100 - 240V, 50/60Hz
- 1-10V dimming schedules and diagnostics
- NOMINAL WATTAGE: 24W
- LUMEN EFFICACY: 100 Lm/W
- LUMEN OUTPUT: 1875 - 2225 Lm
- CRI: Ra > 80
- CCT: 2700 - 5000K
- LED BRAND: Bridgelux
- BEAM ANGLE: 20°/40°
- LUMEN MAINTENANCE: > 50000 hours-L70, @25 °C Safety
- Available in white and silver
- WARRANTY TIME: 5 Years





BULB



INDOOR

LAWRENCE  
LED CORN BULB

- NOMINAL VOLTAGE: AC 120-277V, (also available in 347V)50/60Hz
- 1-10V dimming schedules and diagnostics
- NOMINAL WATTAGE: 5-120W
- 5W-40W, no fan 60W--one fan 80W-150W--double fans.
- LUMEN EFFICACY: 125 Lm/W
- LUMEN OUTPUT: 17500 Lm
- CRI: Ra > 80
- CCT: 4000K, 5000K, 5700K
- BEAM ANGLE: 360°
- RATINGS: IP 65
- LUMEN MAINTENANCE: > 50000 hours-L70, @25 °C (77 °F)
- IP64
- High transparency and UV resistant polycarbonate lens
- PHOTOCELL: OPTIONAL
- MOTION SENSOR: OPTIONAL
- 5 years warranty



EPISTAR  
INDOOR

BERTA  
LED CORN BULB

- NOMINAL VOLTAGE: AC 120 - 277V
- 1-10V dimming schedules and diagnostics
- NOMINAL WATTAGE: 25 - 80W (W/M)
- NOMINAL LUMEN: 3000 - 9600Lm
- LUMINOUS FLUX > 120 Lm/W
- CCT: 3000 - 5700K
- CRI: Ra > 85
- L70 Maintenance rate at 50,000 hours
- POWER FACTOR > 90 (%)
- LED: Epistar 2835
- OPERATING TEMPERATURE Range -40 to 45 (oC)
- OPERATING HUMIDITY 20% - 70% (RH)
- Ingress Protection Classification (IP) 65
- 5 years warranty



INDOOR

CHERISH  
PAR38 E26

- NOMINAL VOLTAGE: AC 110- 120V, 50/60Hz
- 1-10V dimming schedules and diagnostics
- NOMINAL WATTAGE: 15W
- LUMEN OUTPUT: 1250 Lm
- CRI: Ra > 80
- CCT: 2700 and 5000K
- BEAM ANGLE: 110°
- LUMEN MAINTENANCE: > 25000 hours-L70, @25 °C (77 °F)
- APPLICATION: Indoor



INDOOR

SUNSHINE  
GU5.3-GU10

- NOMINAL VOLTAGE: AC 110-120V, 50/60Hz
- 1-10V dimming schedules and diagnostics
- NOMINAL WATTAGE: 4 - 6W
- LUMEN OUTPUT: 210 - 500 Lm
- CRI: Ra > 80
- CCT: 2700 and 7000K
- BEAM ANGLE: 110°
- LUMEN MAINTENANCE: > 40,000 hours-L70, @25 °C (77 °F)
- APPLICATION: Indoor



INDOOR

DELILAH  
MR16

- 1-10V dimming schedules and diagnostics
- NOMINAL WATTAGE: 15W - 6W - 7W
- LUMEN OUTPUT: 1250 Lm
- CRI: Ra > 80
- CCT: 2700 and 5000K
- BEAM ANGLE: 24°,25°,36°
- LUMEN MAINTENANCE: > 25000 hours-L70, @25 °C (77 °F)
- APPLICATION: Indoor







INDOOR

SUMMER  
LED BULB E27

- NOMINAL VOLTAGE:  
AC 110- 120V, 50/60Hz
- 1-10V dimming schedules and  
diagnostics
- NOMINAL WATTAGE: 5- 10W
- LUMEN OUTPUT: 400 - 1000 Lm
- CRI: Ra > 80
- CCT: 2700 and 5000K
- BEAM ANGLE: 270°
- LUMEN MAINTENANCE: > 40,000  
hours-L70, @25 °C (77 °F)



INDOOR

WINTER  
LED BULB E14/E27

- NOMINAL VOLTAGE:  
AC 110- 120V, 50/60Hz
- 1-10V dimming schedules and  
diagnostics
- NOMINAL WATTAGE: 3- 5W
- LUMEN OUTPUT: 280 - 485 Lm
- CRI: Ra > 80
- CCT: 3000 - 6000K
- BEAM ANGLE: 270°
- LUMEN MAINTENANCE: > 40,000  
hours-L70, @25 °C (77 °F)



INDOOR

JOANNE  
LED CANDLE BULB

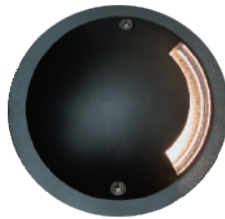
- NOMINAL VOLTAGE:  
AC 110- 120V, 50/60Hz
- E14 / E12
- 1-10V dimming schedules and  
diagnostics
- NOMINAL WATTAGE: 6W
- LUMEN OUTPUT: 370 - 420 Lm
- CRI: Ra > 80
- CCT: 3000 and 5000K
- BEAM ANGLE: 240°
- LUMEN MAINTENANCE: > 25000  
hours-L70, @25 °C (77 °F)



# LED UNDERGROUND LIGHT



# UNDERGROUND



EXAGON™ UNDERGROUND

**BORNA**  
LED UNDERGROUND

- INPUT VOLTAGE: 24V DC / 120-240V
- POWER: 1W
- LED: 3XSMD
- HOUSING: 12# Die-casting grey powder coated aluminium.
- T = 60 - 80µm Adhesion of ISO class 1 / ASTM class 4B
- FRONT COVER: Hard chrome-plated stainless steel SUS 316#
- GLASS: Step tempered glass. T = 7mm
- GLASS PRESSURE CAPACITY: Full area = 1704 kgs
- GASKET: Molding shaped silicone seal
- LENS: Optical lens efficiency ≥ 85%
- OPERATING TEMPERATURE: -20 °C~40°C



EXAGON™ UNDERGROUND

**EDDA**  
LED UNDERGROUND

- INPUT VOLTAGE: 24V DC
- POWER: 3.5W RGB
- LED: 3XSMD
- 49 Lm
- HOUSING: 12# Die-casting grey powder coated aluminium.
- T = 60 - 80µm Adhesion of ISO class 1/ASTM class 4B
- FRONT COVER: Hard chrome-plated stainless steel SUS 316#
- GLASS: Step tempered glass. T=7mm
- GLASS PRESSURE CAPACITY: Full area = 1704 kgs
- GASKET: Molding shaped silicone seal
- LENS: Optical lens efficiency ≥ 85%
- OPERATING TEMPERATURE: -20 °C~40°C



EXAGON™ UNDERGROUND

**THELMA**  
LED UNDERGROUND

- LED: 5630SMD
- INPUT VOLTAGE: 24V DC / 120 - 240V
- POWER: 3W
- LED: 3XSMD
- HOUSING: 12# Die-casting grey powder coated aluminium.
- T = 60 - 80µm Adhesion of ISO class 1 / ASTM class 4B
- FRONT COVER: Hard chrome-plated stainless steel SUS 316#
- GLASS: Step tempered glass. T= 7 mm
- GLASS PRESSURE CAPACITY: Full area = 1704 kgs
- GASKET: Molding shaped silicone seal
- LENS: Optical lens efficiency ≥ 85%
- OPERATING TEMPERATURE: -20 °C~40°C



EXAGON™ UNDERGROUND

**UMA**  
LED UNDERGROUND

- INPUT VOLTAGE: 24V DC / 120 - 240V
- POWER: 3W
- LED: 5630SMD
- HOUSING: 12# Die-casting grey powder coated aluminium.
- T=60-80µm Adhesion of ISO class 1 / ASTM class 4B
- FRONT COVER: Hard chrome-plated stainless steel SUS 316#
- GLASS: Step tempered glass. T=7mm
- GLASS PRESSURE CAPACITY: Full area = 1704 kgs
- GASKET: Molding shaped silicone seal
- LENS: Optical lens efficiency ≥ 85%
- OPERATING TEMPERATURE: -20 °C~40°C



EXAGON™ UNDERGROUND

**ANNA**  
LED UNDERGROUND

- LED QUANTITY: 9 pcs
- POWER: 9W
- LED: 5630SMD
- INPUT VOLTAGE: AC 90~265V / DC 24V
- FREQUENCY RANGE: 50/60Hz
- COLOUR: Single / RGB / Control DMX512
- BEAM ANGLE: 30°60°
- ORIGINAL LUMINOUS FLUX: 900 Lm
- WORKING AMBIENT TEMP.: -25°C~55°C
- WORKING AMBIENT HUMIDITY: 10~90%
- PROTECTION GRADE: IP67
- CRI: > 70
- GLASS: Clear / glossy



EXAGON™ UNDERGROUND

**VIDA**  
LED UNDERGROUND

- INPUT VOLTAGE: 24V DC
- POWER: 3.5W RGB
- LED: 5630SMD
- FREQUENCY RANGE: 50/60Hz
- COLOUR: Single / RGB / Control DMX512
- BEAM ANGLE: 30°60°
- ORIGINAL LUMINOUS FLUX: 350 Lm
- Working ambient Temp. -25°C~55°C
- WORKING AMBIENT HUMIDITY: 10~90%
- PROTECTION GRADE: IP67
- CRI: > 70
- GLASS: Clear / glossy



EXAGON™ UNDERGROUND

**DINA**  
LED UNDERGROUND

- LED QUANTITY: 9 pcs
- POWER: 5W
- LED: 5630SMD
- INPUT VOLTAGE: AC90~265V / DC 24V
- FREQUENCY RANGE: 50/60Hz
- COLOUR: Single / RGB / Control DMX512
- BEAM ANGLE: 30° - 120°
- ORIGINAL LUMINOUS FLUX: 500 Lm
- WORKING AMBIENT TEMP.: -25°C~55°C
- WORKING AMBIENT HUMIDITY: 10~90%
- PROTECTION GRADE: IP67
- CRI: > 70
- GLASS: Clear / glossy



EXAGON™ UNDERGROUND

**RAMA**  
LED UNDERGROUND

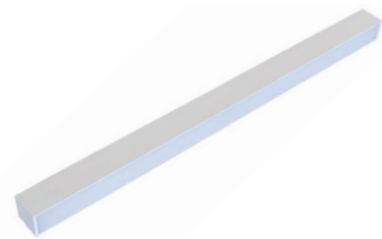
- INPUT VOLTAGE: 6V DC
- POWER: 1W
- LED: 5630SMD
- FREQUENCY RANGE: 50/60Hz
- COLOUR: Single / RGB / Control DMX512
- BEAM ANGLE: 30° - 120°
- ORIGINAL LUMINOUS FLUX: 90 Lm
- WORKING AMBIENT TEMP.: -25°C~55°C
- WORKING AMBIENT HUMIDITY: 10~90%
- PROTECTION GRADE: IP67
- CRI: > 70
- GLASS: Clear / glossy



# LED ARCHITECTURAL



# LINEAR



**PHILIPS**  
EXAGON™ ARCHITECTURAL

## CONSTANCE LED LINEAR

- NOMINAL VOLTAGE: AC 100-277V / 347V, 50/60Hz
- 1-10V dimming schedules and diagnostics
- NOMINAL WATTAGE: 25 - 50W
- LUMEN EFFICACY: 100 Lm/W
- LUMEN OUTPUT: 2500 - 5000 Lm
- CRI: Ra > 80
- CCT: 2500 - 4000K
- LED: Philips 3030
- BEAM ANGLE: 110°
- FIXTURE MATERIAL: White Aluminium
- RATINGS: IP44
- LUMEN MAINTENANCE:  
> 50000 hours - L70, @25 °C (77 °F)
- FIXTURE DIMENSION: 1176 x 73 x 80 mm
- Without screws on the end caps, quicker fitting for continuous run without shadow
- Suspended, ceiling, recessed mounted for different applications



**EPISTAR**  
EXAGON™ ARCHITECTURAL OPTIONAL COLOURS

## SYDNEY LED LINEAR

- NOMINAL VOLTAGE: AC 85-265V, 50/60Hz
- 1-10V dimming schedules and diagnostics
- NOMINAL WATTAGE: 20W
- LUMEN EFFICACY: 100 Lm/W
- LUMEN OUTPUT: 2000 Lm
- CRI: Ra > 80
- CCT: 2800 - 6500 K
- LED BRAND: Epistar
- LENS: Frosted (milky white) / stripe / clear
- BEAM ANGLE: 110°
- Transmittance: 85%
- FIXTURE MATERIAL: Aluminium
- RATINGS: IP44 / IP65 / IP67
- LUMEN MAINTENANCE:  
> 50000 hours - L70, @25 °C (77 °F)
- FIXTURE DIMENSION:  
W 20 x H 20 mm, custom-made length
- COLOUR: Silver, White, Black



**EPISTAR**  
EXAGON™ ARCHITECTURAL

## ADMIRE RECESSED LED LINEAR

- NOMINAL VOLTAGE:  
AC 100-277 V / 347 V, 50/60Hz
- 1-10V dimming schedules and diagnostics
- NOMINAL WATTAGE: 35W
- LUMEN EFFICACY: 100 Lm/W
- LUMEN OUTPUT: 3000 - 5000 Lm
- CRI: Ra > 80 also available in Ra > 90
- CCT: 3500 - 5700K / RGB / RGBW
- LED: Epistar
- LENS: Frosted (milky white) / stripe / clear
- BEAM ANGLE: 110°
- FIXTURE MATERIAL: Aluminium
- RATINGS: IP44 / IP65 / IP67
- LUMEN MAINTENANCE:  
> 50000 hours - L70, @25 °C (77 °F)
- FIXTURE DIMENSION: 1200x70x75mm



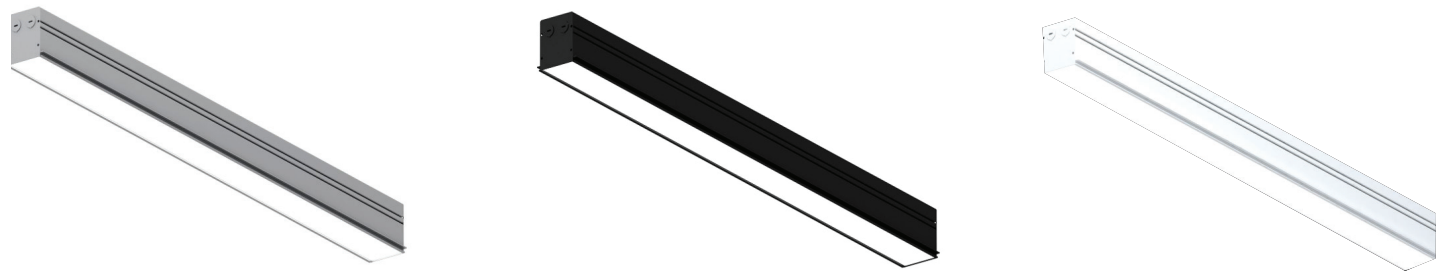
**EPISTAR**  
EXAGON™ ARCHITECTURAL OPTIONAL COLOURS

## MADISON SUSPENDED LED

- NOMINAL VOLTAGE: AC 85 - 265 V, 50/60Hz
- 1-10V dimming schedules and diagnostics
- NOMINAL WATTAGE: 20 - 60W
- LUMEN EFFICACY: 100 Lm/W
- LUMEN OUTPUT: 2000-6000 Lm
- CRI: Ra > 80
- CCT: 2800 - 6500K
- LED: Epistar
- LENS: Frosted (milky white) / stripe / clear
- BEAM ANGLE: 110°
- TRANSMITTANCE: 85%
- FIXTURE MATERIAL: Aluminium
- RATINGS: IP44 / IP65 / IP67
- LUMEN MAINTENANCE:  
> 50000 hours - L70, @25 °C (77 °F)
- FIXTURE DIMENSION:  
Φ 60 mm, and custom-made length
- COLOUR: Silver, White, Black



# SUSPENDED LIGHT



EXAGON™ ARCHITECTURAL  OPTIONAL COLOURS 

## SANA SUSPENDED LED LIGHT

- NOMINAL VOLTAGE: AC 120 - 277V
- 1-10V dimming schedules and diagnostics
- END CAPS: Flat end cap provides a clean finish
- NOMINAL WATTAGE: 40W
- 4000 Lm
- Efficiency 100 Lm/W
- CCT: 3000 - 5000K
- CRI: Ra > 82
- BEAM ANGLE: 120
- DRIVER: Mean Well IP65
- POWER FACTOR: > 0.9
- THD: < 20%
- FINISH: Durable, low gloss, textured powder coated finish
- LENGTHS: 4' and 8' fixtures that can also be joined for continuous rows
- HOUSING: 20 gauge cold-rolled steel construction
- Available in White/Black and Silver







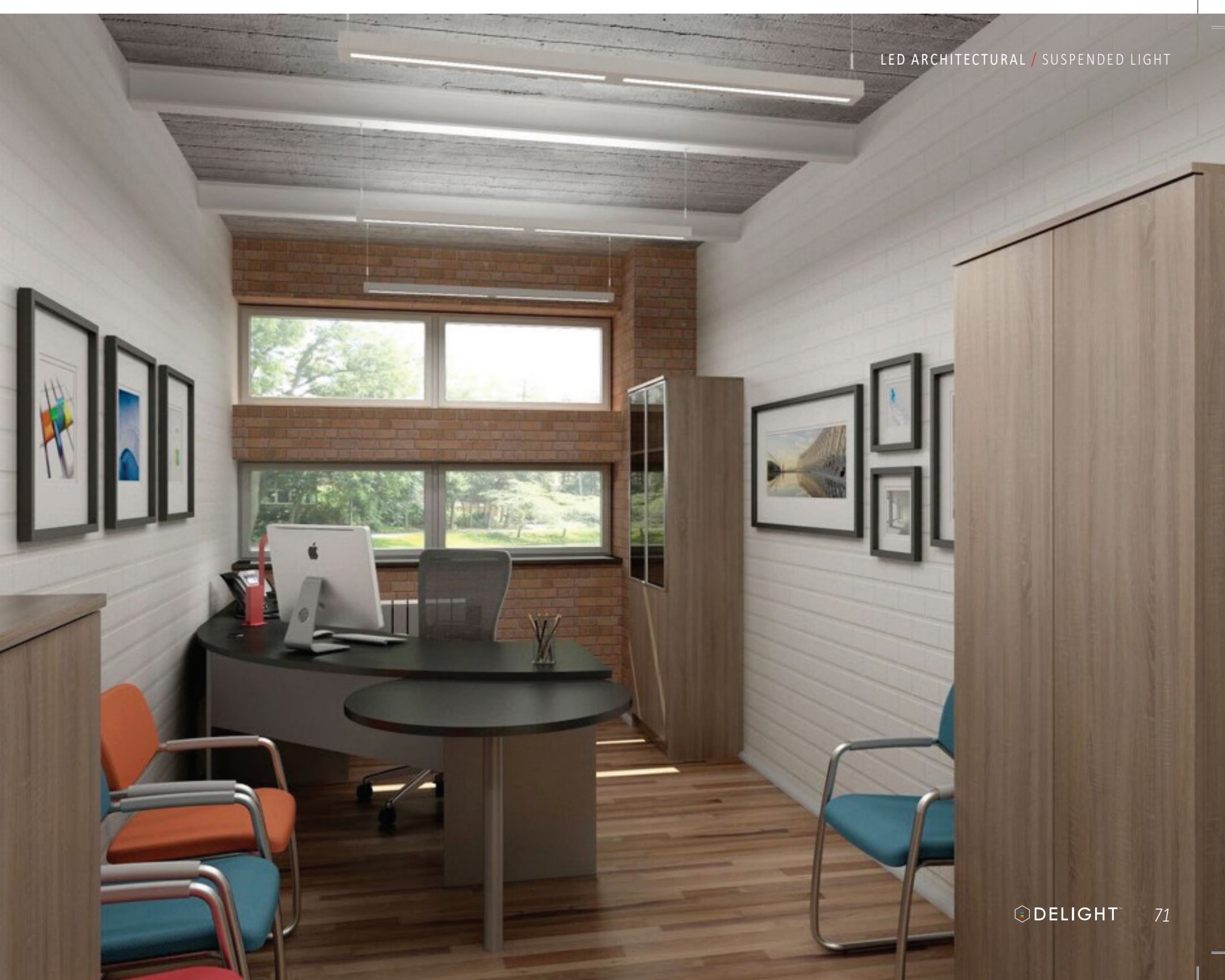
EXAGON™ ARCHITECTURAL 

**SLIK**  
1'X4' SUSPENDED LED LIGHT

- NOMINAL VOLTAGE: AC 120 - 277V
- 1-10V dimming schedules and diagnostics
- NOMINAL WATTAGE: 54W
- 4929 Lumen
- Efficiency 93 Lm/W
- CCT: 3000 - 3500 - 4000 - 5000K
- CRI: Ra > 80
- BEAM ANGLE: 110
- DRIVER: Mean Well IP65
- POWER FACTOR: > 0.9
- THD: < 20%
- OPERATING TEMPERATURE: -20 to +40 C
- STORAGE TEMPERATURE: -40 to +85 C
- OPERATING HUMIDITY: 10% - 80%
- STORAGE HUMIDITY: 10%-80%
- FIXTURE DIMENSIONS: L 47.24" x W 11.81" x H 1.06"
- LIFESPAN > 50,000 hrs



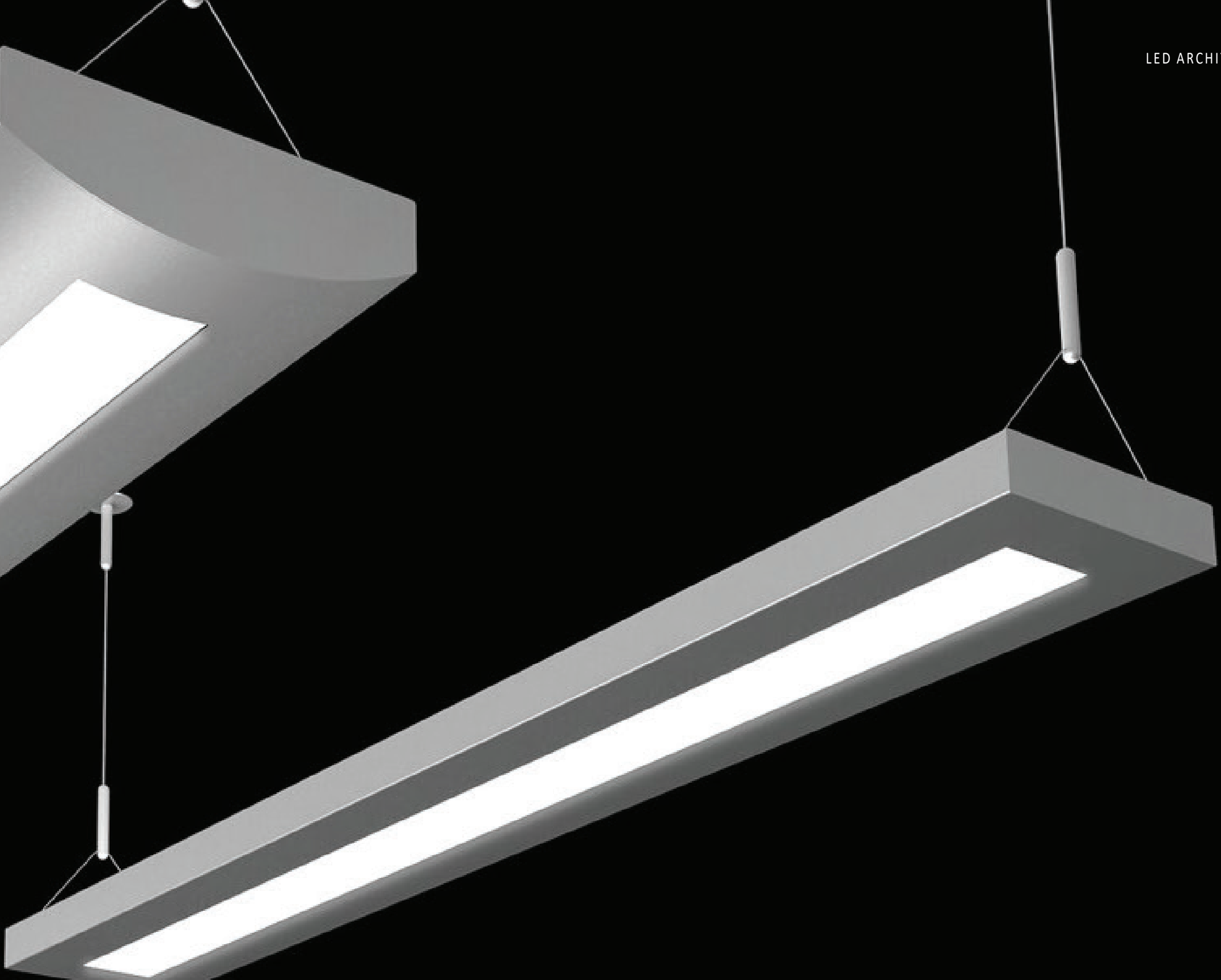
















EXAGON™ ARCHITECTURAL MW MEAN WELL

**PACIFICA**  
LED SUSPENDED LIGHT

- NOMINAL VOLTAGE: AC 120 - 277V
- 1-10V dimming schedules and diagnostics
- END CAPS: Flat end cap provides a clean finish
- NOMINAL WATTAGE: 10 - 22W
- 1000 - 2200 Lm
- Efficiency 100 Lm/W
- CCT: 3000-5000K
- CRI: Ra > 82
- BEAM ANGLE: 120
- DRIVER: Mean Well IP65
- POWER FACTOR: > 0.9
- THD: < 20%
- FINISH: Durable, low gloss, textured powder coated finish
- LENGTHS: 4' and 8' fixtures that can also be joined for continuous rows
- HOUSING: 20 gauge cold-rolled steel construction



EXAGON™ ARCHITECTURAL MW MEAN WELL

**SERENA**  
LED SUSPENDED LIGHT

- NOMINAL VOLTAGE: AC 120-277V
- 1-10V dimming schedules and diagnostics
- END CAPS: Flat end cap provides a clean finish
- NOMINAL WATTAGE: 10 - 22 W
- 1000 - 2200 Lm
- Efficiency 100 Lm/W
- CCT: 3000 - 5000K
- CRI: Ra > 82
- BEAM ANGLE: 120
- DRIVER: Mean Well IP65
- POWER FACTOR: > 0.9
- THD: < 20%
- FINISH: Durable, low gloss, textured powder coated finish
- LENGTHS: 4' and 8' fixtures that can also be joined for continuous rows
- HOUSING: 20 gauge cold-rolled steel construction



EXAGON™ ARCHITECTURAL MW MEAN WELL

**FRIDA**  
LED SUSPENDED LIGHT

- NOMINAL VOLTAGE: AC 120 - 277V
- 1-10V dimming schedules and diagnostics
- END CAPS: Flat end cap provides a clean finish
- NOMINAL WATTAGE: 10 - 22 W
- 1000 - 2200 Lm
- EFFICIENCY: 100 Lm/W
- CCT: 3000 - 5000K
- CRI: Ra > 82
- BEAM ANGLE: 120
- DRIVER: Mean Well IP65
- POWER FACTOR: > 0.9
- THD: < 20%
- FINISH: Durable, low gloss, textured powder coated finish
- LENGTHS: 4' and 8' fixtures that can also be joined for continuous rows
- HOUSING: 20 gauge cold-rolled steel construction



# WALL SCONCE



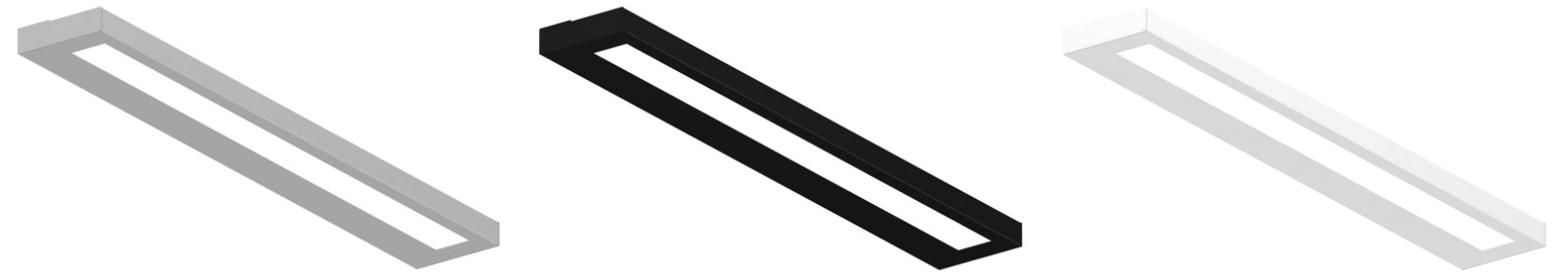
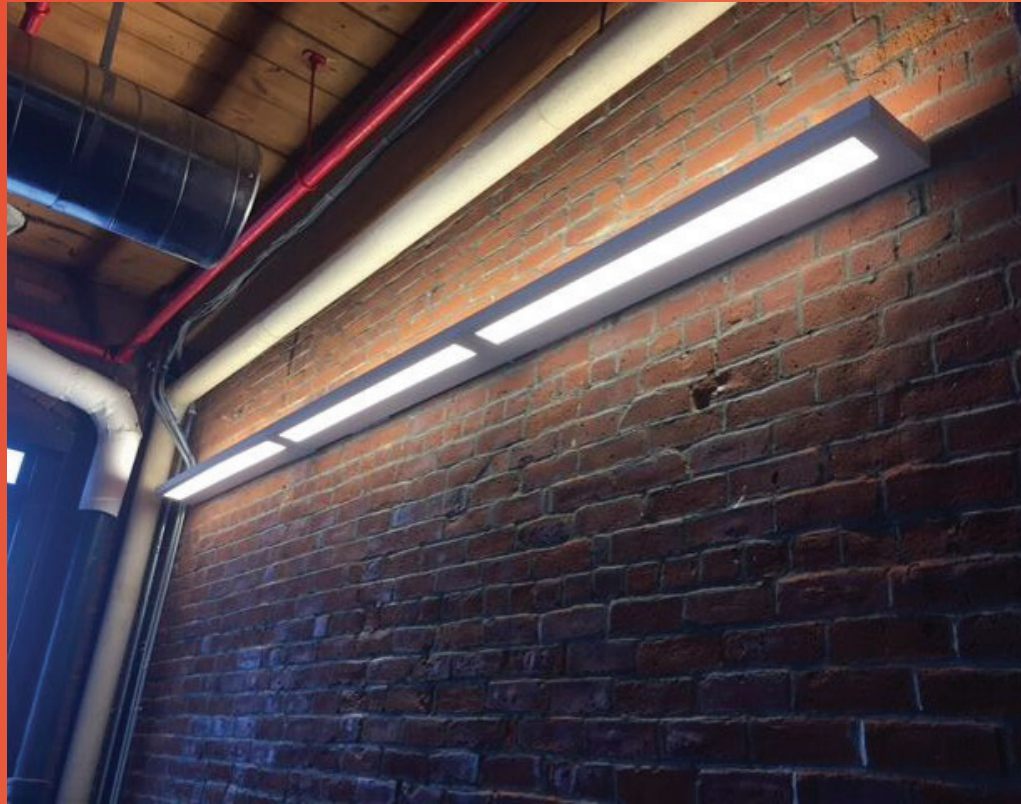
EXAGON™ ARCHITECTURAL  OPTIONAL COLOURS 

## SERENA LED WALL SCONCE

- NOMINAL VOLTAGE: AC 120 - 277V
- 1-10V dimming schedules and diagnostics
- END CAPS: Flat end cap provides a clean finish
- NOMINAL WATTAGE: 35 W
- 3500 Lm
- EFFICIENCY: 100 Lm/W
- CCT: 3000 - 5000K
- CRI: Ra > 82
- BEAM ANGLE: 120
- DRIVER: Mean Well IP65
- POWER FACTOR: > 0.9
- THD: < 20%
- FINISH: Durable, low gloss, textured powder coated finish
- LENGTHS: 4' and 8' fixtures that can also be joined for continuous rows
- HOUSING: 20 gauge cold-rolled steel construction
- Available in White, Black and Silver







EXAGON™

ARCHITECTURAL



OPTIONAL COLOURS



## ELISA

### LED WALL SCONCE

- NOMINAL VOLTAGE: AC 120 - 277V
- 1-10V dimming schedules and diagnostics
- END CAPS: Flat end cap provides a clean finish
- NOMINAL WATTAGE: 35 W
- 3500 Lm
- LED: Nichia
- EFFICIENCY: 100Lm/W
- CCT: 3000 - 5000K
- CRI: Ra > 82
- BEAM ANGLE: 120
- DRIVER: Mean Well IP65
- POWER FACTOR: > 0.9
- THD: < 20%
- FINISH: Durable, low gloss, textured powder coated finish
- LENGTHS: 4' and 8' fixtures that can also be joined for continuous rows
- HOUSING: 20 gauge cold-rolled steel construction





**NICHIA PHILIPS OSRAM EPISTAR**  
**EXAGON™ ARCHITECTURAL** **MEAN WELL**

**ALEXIA**  
LED WALL SCONCE

- NOMINAL VOLTAGE: AC 90 - 260 V
- 1-10V dimming schedules and diagnostics
- END CAPS: Flat end cap provides a clean finish
- NOMINAL WATTAGE: 6 - 36 W
- 1000 - 2200 Lm
- EFFICIENCY: 100 Lm/W
- CCT: 3000 - 6000K
- CRI: Ra > 82
- BEAM ANGLE: 120
- DRIVER: Mean Well IP65
- LED: Nichia / Philips / Orsam / Epistar
- POWER FACTOR: > 0.9
- THD: < 20%
- FINISH: Durable, low gloss, textured powder coated finish
- LENGTHS: 400 mm
- HOUSING: Stainless Steel



**NICHIA PHILIPS OSRAM EPISTAR**  
**EXAGON™ ARCHITECTURAL** **MEAN WELL**

**NADIA**  
LED WALL SCONCE

- NOMINAL VOLTAGE: AC 120 - 260V
- 1-10V dimming schedules and diagnostics
- END CAPS: Flat end cap provides a clean finish
- NOMINAL WATTAGE: 3 - 18 W
- 300-1800 Lm
- EFFICIENCY: 100 Lm/W
- CCT: 3000 - 6000K
- CRI: Ra > 82
- BEAM ANGLE: 120
- DRIVER: Mean Well IP65
- LED: Nichia / Philips / Orsam / Epistar
- POWER FACTOR: > 0.9
- THD: < 20%
- FINISH: Durable, low gloss, textured powder coated finish
- LENGTHS: 140 - 800 mm
- HOUSING: Stainless Steel







**NICHIA PHILIPS OSRAM EPISTAR**  
**EXAGON™ ARCHITECTURAL MW**  
MEAN WELL

### TULLIA

LED WALL SCONCE

- NOMINAL VOLTAGE: AC 120 - 240V
- 1-10V dimming schedules and diagnostics
- END CAPS: Flat end cap provides a clean finish
- NOMINAL WATTAGE: 6 - 36 W
- 1000 - 2200 Lm
- Efficiency 100 Lm/W
- CCT: 3000 - 6000K
- CRI: Ra > 82
- BEAM ANGLE: 120
- DRIVER: Mean Well IP65
- LED: Nichia / Philips / Orsam / Epistar
- POWER FACTOR: > 0.9
- THD: < 20%
- FINISH: Durable, low gloss, textured powder coated finish
- LENGTHS: 240 - 1110 mm
- HOUSING: Stainless Steel



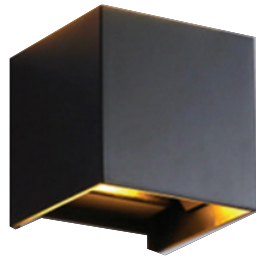
**NICHIA PHILIPS OSRAM EPISTAR**  
**EXAGON™ ARCHITECTURAL MW**  
MEAN WELL

### AMANI

LED WALL SCONCE

- NOMINAL VOLTAGE: AC 120 - 240V
- 1-10V dimming schedules and diagnostics
- END CAPS: Flat end cap provides a clean finish
- NOMINAL WATTAGE: 7W
- 700 Lm
- Efficiency 100 Lm/W
- CCT: 3000 - 6000K
- CRI: Ra > 82
- BEAM ANGLE: 120
- DRIVER: Mean Well IP65
- LED: Nichia / Philips / Orsam / Epistar
- POWER FACTOR: > 0.9
- THD: < 20%
- FINISH: Durable, low gloss, textured powder coated finish
- LENGTHS: 400 mm
- HOUSING: Stainless Steel





EPISTAR

EXAGON™

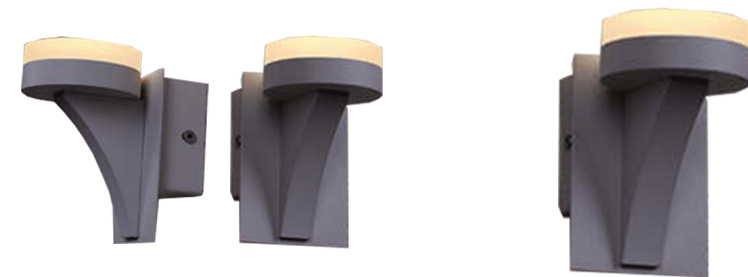
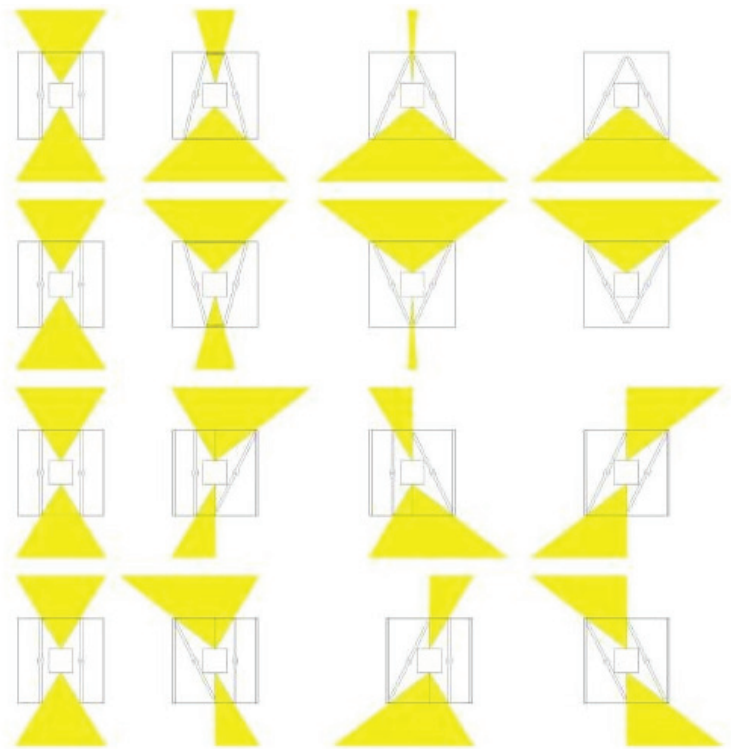
ARCHITECTURAL

OPTIONAL COLOURS

**MINIMALIST**

LED WALL SCONCE

- NOMINAL VOLTAGE: 220V - 240V AC, 50/60Hz
- 1- 10V dimming schedules and diagnostics
- NOMINAL WATTAGE: 3 - 6W
- Aluminium body
- PC cover
- LED: Epistar
- CRI: Ra > 70
- CCT: 2700 and 5000K
- FIXTURE SIZE: 100\*100\*100 mm
- Available in brush silver/black/white



EDISON

EXAGON™

ARCHITECTURAL

**ALYSSA**

WALL SCONCE

- POWER: 6W
- WORKING TEMPERATURE: -20°C~60°C
- LIGHT SOURCE: SMD2835
- WORKING HUMIDITY: 20 - 85% RH
- COLOUR TEMPERATURE: White / Natural white / Warm white
- INPUT VOLTAGE: 100 - 240V
- WORKING LIFETIME: 30000 hrs
- LUMINOUS FLUX: 360 Lm
- IP RATING: 20
- APPLICATION: Indoor
- MATERIAL: Aluminium + acrylic
- LED: EDISON
- MOUNTING TYPE: Surface





# GET IN TOUCH



## 1 DELIGHT Technologies / Head Office

*The Maycid Tower*  
1555 Boul. des Laurentides, bur. 300  
Laval (QC) Canada H7M 5Y6

T +1 (888) 400.3941  
F + (514) 500.1252  
E [info@iseedelight.com](mailto:info@iseedelight.com)

## 2 DELIGHT Technologies / Europe

*A/S Société OML Systèmes*  
103 rue de Ménilmontant  
Paris, France 75020

T + 33 (1) 85.64.07.75  
F + 33 (1) 85.64.07.75  
E [info@iseedelight.com](mailto:info@iseedelight.com)

## 3 DELIGHT Technologies / Africa

*Édifce Mateur Centre, 2e, bur. 2*  
Avenue Place de Mateur  
Mateur, Tunisie 7030

T + (216) 28.251.250  
E [info@iseedelight.com](mailto:info@iseedelight.com)





*DELIGHT PRESENTS HIGH PERFORMANCE AND INNOVATIVE SOLUTIONS THAT SATISFIES EACH SPECIFIC PROJECT REQUIREMENT.  
DELIGHT'S TEAM OF ARCHITECTS AND ENGINEERS FOCUS IS TO PROVIDE SMART SOLUTIONS FOR LIGHTING DESIGN AND CONTROL SYSTEMS.*